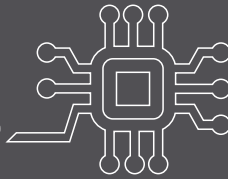


RAISING THE STANDARDS OF  
**HIGH TECH INDUSTRIES**



**Gerflor**<sup>®</sup>  
theflooringgroup

# GERFLOR, PARTNER OF THE HIGH-TECH INDUSTRIES FOR 40 YEARS

A selection of our clients

ELECTRONICS - OPTICS - NUCLEAR - AEROSPACE - DEFENCE  
PHOTOVOLTAIC - AERONAUTICS



## Automotive Industry TESTIMONIAL FROM ACTIA



*"We were able to install the flooring in just one day, much sooner than the three days planned at the start of the project. Once the installation was complete, the area could be used immediately without any drying time."*

**Mr BONNAL**, Production and building maintenance manager

— QUALITY CONTROL AREA

# Aerospace Industry TESTIMONIAL FROM AIR LIQUIDE



*"Dovetail connection is very discreet and gives the impression of a jointless continuous floor."*

**Mr. CAROLLO**, Technical support manager

—○ PRODUCTION AREA

# Photovoltaic Industry TESTIMONIAL FROM SOLARMAX



*"No problem to install looselay on concrete with fine cracks. We appreciated the flexibility of the installation. We could take it away and install it at an other place."*

—○ PRODUCTION AREA

# Electronics TESTIMONIAL FROM LACROIX ELECTRONICS



*"Our ESD floor was stained by our varnishing process and damaged by pallet trucks traffic. Quickly installed on top of the old floor without stopping production, the new floor meets all our requirements, including the ESD standards."*

**Mr. LEMETAYER, Maintenance Manager**

- QUALITY CONTROL AREA
- COATING AREA
- CORRIDORS

# Automotive Lighting Industry TESTIMONIAL FROM HELLA



*"The industrial floor is very easy to clean, extremely resistant to traffic of pallet trucks, and also ensures a lower noise level. We are fully satisfied!"*

**Mr. CARMENA LEON, Director of Hella Spain and Portugal**

- WAREHOUSE
- WORKSHOP
- OFFICES

# GERFLOR EXPERTISE

## The specifics of the high technology industry

To maximize the quality of manufactured products and to ensure personal safety, the electronics, optoelectronics and nuclear industries not only follow cleanroom procedures but also comply with the protection standards for electronic and electrical devices against electrostatic discharges (ESD):

- IEC/EN 61340-5-1
- ANSI/ESD S20.20

The elimination of electrostatic discharges at source by using ESD flooring is an effective solution for limiting risk of electrostatic discharges.



Logo on the floor to indicate an EPA\*

\* EPA = ESD Protected Area



## Gerflor solutions prevent esd risks so they can be installed in EPA\*

\* ESD Protected Area

GERFLOR controls all the parameters and standards that, when combined with quality ESD shoes, enable the floor to:



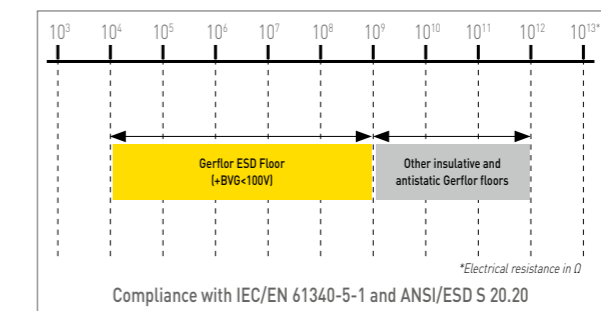
### LIMIT THE ACCUMULATION OF STATIC ELECTRICITY

- IEC/EN 61340-4-5
- ANSI/ESD STM 97.2



### EFFICIENTLY ELIMINATE ELECTROSTATIC CHARGES

- IEC/EN 61340-4-5 and IEC/EN 61340-4-1
- ANSI/ESD STM 97.1 and ANSI/ESD S 7.1



GERFLOR offers a comprehensive range of ESD floorings that let you:



**PROTECT ELECTRONIC EQUIPMENT AND COMPONENTS** from the risk of electrostatic discharges (EPA\*)



**PROTECT PEOPLE** from the risk of electrostatic discharges

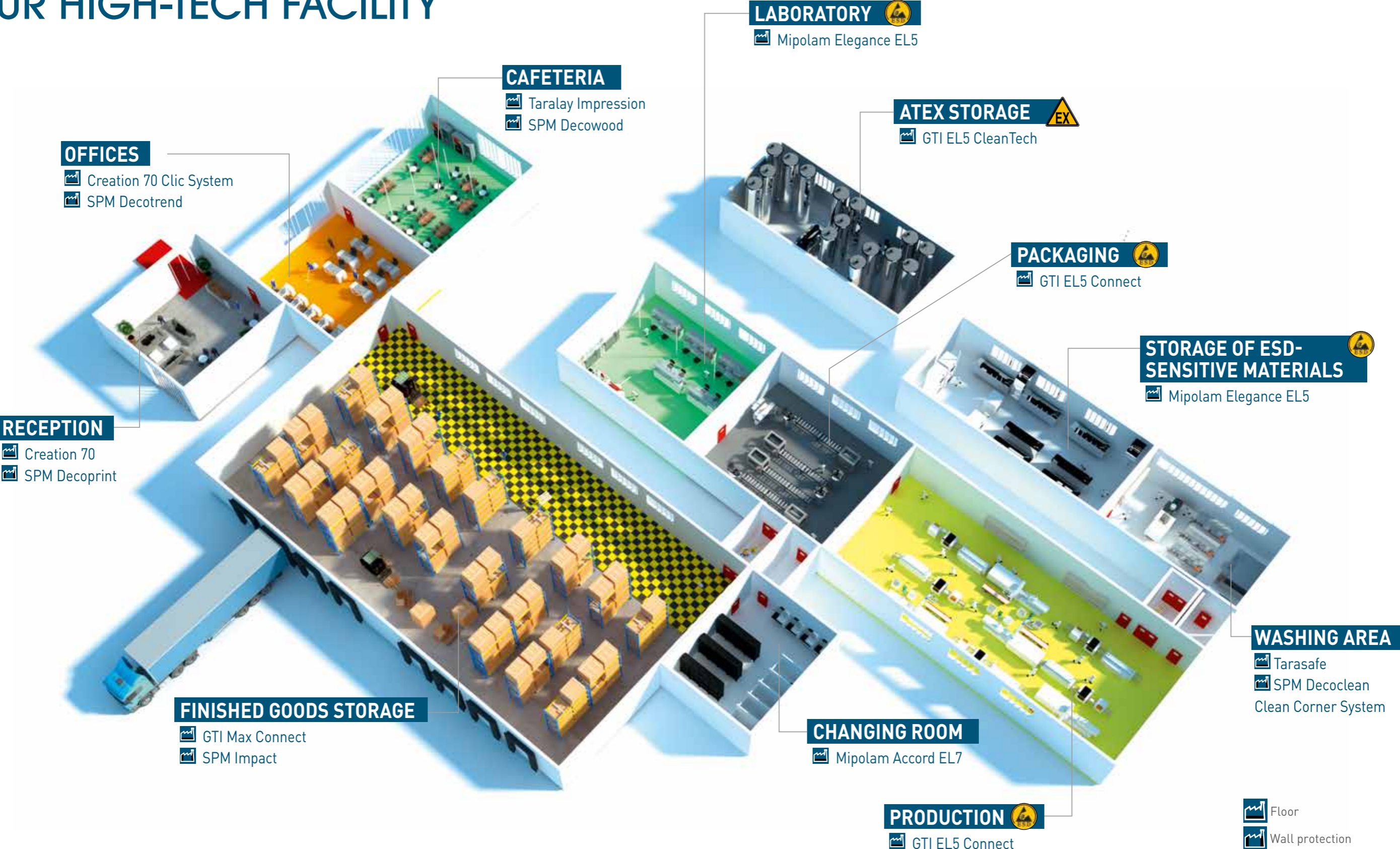


**PROTECT PREMISES** from the risk of explosion (ATEX area)

## THE ESD PHENOMENON IN CONVENTIONAL ENVIRONMENTS

To ensure the best possible ESD-free work environment, all GERFLOR flooring solutions feature an antistatic design (charge potential less than 2kV according to EN 1815).

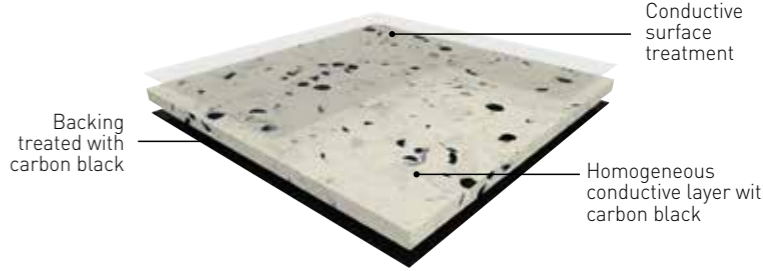
# A GLOBAL SOLUTION FOR EACH AREA OF YOUR HIGH-TECH FACILITY



# ESD FLOOR FOR NEW-BUILT



## MIPOLAM ELEGANCE EL5



THE **+** HIGH-PERFORMANCE FLOORING FOR ESD AREAS



### CONTROL OVER ESD PHENOMENA

- Compliant with IEC 61340-5-1 & ESD S20.20
- Low charge potential
- High electrical resistance (Rt < 10<sup>9</sup> Ω according to EN 1081)



### DURABILITY

- Resistance to chemical attacks
- Resistance to traffic

# ESD FLOOR FOR RENOVATION

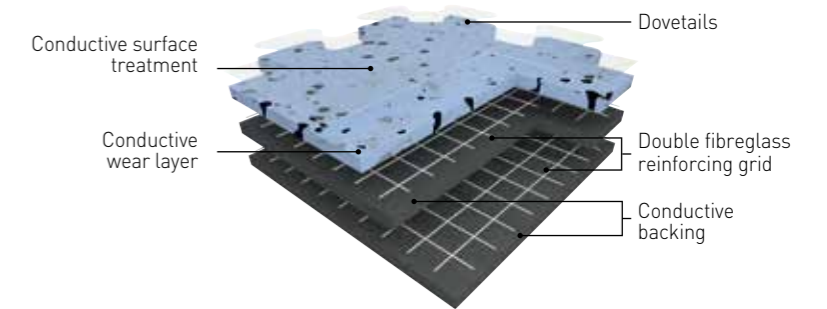


BEFORE



AFTER

## GTI EL5 Connect



THE **+** NO DOWNTIME DURING INSTALLATION



### QUICK AND EASY TO INSTALL

- Loose-lay design: no need to use adhesives
- Easy to replace / repair
- Installation while areas are in use: no production downtime
- Easy plug & play assembly with dovetails



### DESIGNED TO MEET THE REQUIREMENTS OF THE ELECTRONICS INDUSTRY\*

- Compliant with IEC 61340-5-1 & ESD S20.20
- Low charge potential
- High electrical resistance
- Resistance to chemical attacks
- Resistance to traffic

*\* Fitting according to the corresponding Gerflor installation guidelines*

### GTI LOGOS

Clearly identify the area with the ESD logo (GTI EL5 Connect)



Code: 2724

### GTI EL5 CLEANTECH

- A waterproof solution with hot-welded seams and skirting



**GERFLOR INTERNATIONAL** (Other countries)  
Tel: +33 (0)4 74 05 40 00 - Fax: +33 (0)4 74 05 03 13  
e-mail: industry@gerflor.com

**ASIA:** Gerflor Asia  
Tel: +852 9222 6355 - Fax: +852 3006 1449  
e-mail: gerflorasiasa@gerflor.com

**AUSTRALIA/NEW ZEALAND:** Gerflor Australasia Pty. Ltd  
Australia Tel: 1 800 060 785 - New Zealand Tel: 0 800 630 119  
e-mail: gerflor@gerflor.com.au

**AUSTRIA/SWITZERLAND:** Gerflor GmbH  
Tel: +43 (0)72 29/70 800-0 - Fax: +43 (0)72 29/70 800-218  
e-mail: austria@gerflor.com - switzerland@gerflor.com

**BELGIUM/LUXEMBURG:** Gerflor Benelux  
Tel: +32 (0)3 766 42 82 - Fax: +32 (0)3 766 29 14  
e-mail: gerflorbel@gerflor.com

**CANADA:** Gerflor International  
Tel: +1 438 333 0752 - Fax: +1 438 380 5425  
e-mail: gerflorcanada@gerflor.com

**CHINA:** Gerflor floorings (China) Co. Ltd.  
Tel: +86 21 6357 8818 - Fax: +86 21 6357 8998  
e-mail: gerflorchina@gerflor.com

**FINLAND:** Gerflor Oy  
Tel: +358 (0) 10 6 17 5150 - Fax: +358 (0) 10 6 17 5152  
e-mail: info@gerflor.fi

**FRANCE:** Gerflor - Service Express:  
   
e-mail: contactfrance@gerflor.com - industry@gerflor.com

**GERMANY:** Gerflor Mipolam GmbH  
Kunden-Service  
Tel: +49 (0) 22 41-25 30-136 - Fax: +49 (0) 22 41-25 30-100  
e-mail: kundenservice@gerflor.com

**IRELAND:** Gerflor Ltd  
Tel: +353 (0) 42 966 1431 - Fax: +353 (0) 42 966 1759  
e-mail: gerflorirl@gerflor.com

**ITALY:** Gerflor S.p.A.  
Tel: +39 02 90 40 10 - Fax: +39 02 90 42 74 84  
e-mail: gerfloritalia@gerflor.com

**LATIN AMERICA (Brazil):** Gerflor América Latina  
Tel: +55 11 38 48 20 20  
e-mail: gerflor@gerflor.com.br

**MIDDLE EAST:** Gerflor Middle East  
Tel: +966 13 847 1779 - Fax: +966 13 847 1781  
e-mail: info@gerflorme.com

**NETHERLANDS:** Gerflor Benelux  
Tel: +31 (0)40 266 17 00 - Fax: +31 (0)40 257 46 89  
e-mail: gerflornl@gerflor.com

**POLAND:** Gerflor Polska Sp z o.o.  
Tel: +48 61 823 34 01 - Fax: +48 61 823 34 33  
e-mail: info@gerflor.pl

**PORTUGAL:** Gerflor Iberia, SA  
Tel: +351 21 843 95 49 - Fax: +351 21 846 55 44  
e-mail: gerflorportugal@gerflor.com

**RUSSIA:** Gerflor zao  
Tel./Fax: +7 495 785 23 71  
e-mail: gerflorussia@gerflor.ru

**SCANDINAVIA:** Gerflor Scandinavia a.s.  
Tel: +47 64 95 60 70 - Fax: +47 64 95 60 80  
e-mail: gerflorscand@gerflor.no

**SPAIN:** Gerflor Iberia, SA  
Tel: +34 91 653 50 11 - Fax: +34 91 653 25 85  
e-mail: gerfloriberia@gerflor.com

**UNITED KINGDOM:** Gerflor Ltd  
Sample service: contractuk@gerflor.com  
Office Tel: +44 (0) 1926 622 600 - Fax: +44 (0) 1926 401 647

**USA:** Gerflor North America  
Tel: 877 GERFLOR (437 3567) - Fax: 847 394 3753  
e-mail: info@gerflorusa.com

industrybygerflor.com  
industry@gerflor.com

ARCHITECTURE  
DECORATION  
SPORT  
TECHNOSPECIFIC

Gerflor. Be CONNECTED!



Follow us on LinkedIn



industrybygerflor.com

## GERFLOR, ECO-RESPONSIBLE SOLUTIONS



**COMPOSITION**  
100% REACH compliant  
FREE of formaldehyde  
FREE of heavy metals  
FREE of solvent



**RECYCLED CONTENT**  
25% average recycled content  
100% REACH compliant recycled content



**RECYCLABILITY**  
100% recyclable product



**INDOOR AIR QUALITY**  
TVOC emissions between 10 and 100 times better than norms requirements  
Floorscore certified  
No formaldehyde emission



**INSTALLATION**  
Innovative adhesive free installation systems



**LCA**  
- Eco-designed according to a product specific Life Cycle Analysis  
- Product specific EPD (Environmental Products Declaration) available  
- Manufactured in an Iso 14001 and Iso 50001 certified site  
- Contribution to many Green Building Schemes (LEED, HQE, BREEAM...)



**WELLNESS**  
Health: Antibacterial activity (inhibits growth > 99%)  
Safety: Anti slip performance  
Comfort: Walking comfort and impact noise reduction

**Gerflor**  
theflooringgroup